



**Güce**  
Odaklanın

**GUÇLU**

[www.gucluhidrolik.com.tr](http://www.gucluhidrolik.com.tr)



## HAKKIMIZDA

GÜÇLÜ HİDROLİK olarak 2005 yılından beri hidrolikli mobil vinç sektöründe faaliyet göstermekteyiz. Yılların verdiği ziraat makineleri yapım tecrübe ve birikimiyle Türkiye' deki vinç sektöründe bir yer edinmenin haklı gururunu yaşıyoruz. Ürün geliştirirken de ana prensibimiz "son teknoloji, çağdaş mühendislik, modern yönetim" dir.

Kalite ve müşteri memnuniyeti temel noktamızdır. Bu nedenle daima müşteri beklentilerini yerine getirmek için çalışmaktayız. Eskiden beri süregelen müşteri memnuniyeti yaklaşımlarımızla satış sonrası destek organizasyonları oluşturarak müşterilerimizin isteklerini yerinde ve zamanında çözüme kavuşturmak da görevimizdir.

Yurtiçi ve yurtdışı pazarlarında firmamız kamyon üstü hidrolik mobil vinçler ve ekipmanları üretmektedir. Organizasyon ana gruplarımız içerisinde yer alan Teknik grubumuzun ÜRÜN GELİŞTİRME ve ARAŞTIRMA çalışmalarıyla ürün yelpazemiz her yıl biraz daha gelişmektedir.

Bunun sonucu olarak ürün iyileştirme ve geliştirme çabamız başarılarla sonuçlanmaktadır. Bizim için ürünlerimiz kalite ve teknoloji kadar insan ilişkilerindeki samimiyet ve saygı da büyük önem taşımaktadır. Bu bilinç bizi önce GÜÇLÜ bir ekip sonra da büyük bir organizasyon yapmıştır.

İşte bu temeller üzerinde yükselen firmamız yurtdışı pazarlarına girme etkinliğini artırmaya ve uluslararası firma niteliğine ulaşmayı kendine hedef edinmiştir. Bu kapsamda 2011 yılında ÖZGÜÇ Hidrolik Vinç Makina Sanayi ve Ticaret Ltd. Şti.'ni kurmuştur.

Amacımız, "takip eden 10 yıl içerisinde Türkiye'de pazar payımızın (%) yüzdesini daha da arttırmak ve Avrupa'da ilk akla gelenler arasına girmek" tir. Sınırlı bir alanda işe başladığımız bu sektörümüzde her geçen yıl gelişen teknolojinin ve sektörün gereklerini yakından takip etmekteyiz. Bilgisayar teknolojisi ile de hizmetlerimizi ileri seviyelere götürmek amacı içindeyiz....

**Güce**  
**Odaklanın**





### Misyon;

- Üretimde verimliliği sürekli kılmak
- Üretim maliyetlerini düşürerek rekabet gücümüzü korumak
- Kalitemizi sürekli geliştirmek,
- Müşterilerimiz ve tedarikçi firmalarımız ile kalite konusunda işbirliği yapmak

- Çalışma koşullarının kalitesini ve güvenliğini geliştirmek
- Personelimizin eğitimine önem vermek
- Çağdaş teknolojiyi izlemek
- Kalite konusunda tüm standartların üzerine çıkmak

### Vizyon;

Firmamız profesyonel kadrosuyla yükleme nakliye montaj demontaj konularında hizmet veren her türlü firmanın ihtiyacı olan hidrolik mobil vinç ihtiyacını karşılamak amacıyla kurulmuştur. Sektörde güçlü, lider ve güvenilir bir kuruluş olmak temel ilkimizdir.

Teknolojik gelişmeleri takip ederek kalite, fiyat ve teminde müşteri memnuniyetini sağlamak ve kalitemizi sürekli geliştirmek amacımızdır.





## ABOUT US

*As GÜÇLÜ HİDROLİK (hydraulics), we have been working and operating since 2005 in the area of winch with hydraulic. We are proud of the point we have reached with our experience by producing farm machinery. When we produce a product Our initial basis is "latest technology, modern engineering, and contemporary methods" Quality and the satisfaction of the client is our main duty for us. That is why have been doing our best to fulfill the needs and expectations of the client. It is our duty for years to solve the problems of the clients and to give the necessary support in its time for pre-sale and post-sale. So this is our ultimate approach to all customers.*

*Our company has been producing hydraulic mobile winch on truck and its equipments in domestic and foreign markets, by the help of our tech-group which is one of the main parts of the organization, our product range has been progressing with their studies of product development and research. As a result of this, our struggle to develop product and research has been resulting in successfully. For us not only the quality and technology of our products but also the intimacy among humanbeings and friendliness have great importance.*

*This sense and perception made us a powerful team and a big organization. Our firm which is based on these principles have aimed to enter into the foreign markets and to be an international company. Considering this situation, in 2011; "Özgüç Hydraulic Crane Machinery Industry and Trade Limited Company" has been established. Our aim is to increase our percentage in turkish market in the following decade and to be a firm among the best firms comes to mind in Europe. In this sector that We started in a the deceloping technology our services and facilites by the help of computer technology.*

### *Mission;*

- To Perpetuate the efficiency in production*
- To maintain our competitiveness by lowering production costs.*
- To improve our quality continuously.*
- To collaborate with our customers and suppliers for the quality*
- To give importance to the training of our staff.*
- To follow the contemporary technology.*
- To ascend all the standards in quality.*

### *Vision;*

*Our company withits professional staff was established to suppl hydraulic mobile winch is the need of every company serving in loading, transport, assembly and dismantling. To be a strong, trustworthy and pioneer organization in the sector is our fundamedtal rule. Following the technological decelopment and cost, and to decelop our quality consistenly is our aim.*



Discover  
the potential

• GH 9 TK ..... 3 Ton .....	<b>4</b>	• GH 75 L ..... 25 Ton .....	<b>30</b>
• GH 15 TK ..... 5 Ton .....	<b>8</b>	• GH 75 YK ..... 25 Ton .....	<b>32</b>
• GH 25 L ..... 8,5 Ton .....	<b>12</b>	• GH 90 L ..... 30 Ton .....	<b>34</b>
• GH 25 YK ..... 8,5 Ton .....	<b>14</b>	• GH 90 YK ..... 30 Ton .....	<b>36</b>
• GH 30 L ..... 10 Ton .....	<b>16</b>	• GH 105 L ..... 35 Ton .....	<b>38</b>
• GH 30 YK ..... 10 Ton .....	<b>18</b>	• GH 105 YK ..... 35 Ton .....	<b>44</b>
• GH 40 L ..... 13,5 Ton .....	<b>20</b>	• GH 135 L ..... 45 Ton .....	<b>46</b>
• GH 50 L ..... 16,5 Ton .....	<b>22</b>	• GH 165 L ..... 55 Ton .....	<b>50</b>
• GH 50 YK ..... 16,5 Ton .....	<b>24</b>	• GH 225 L ..... 75 Ton .....	<b>54</b>
• GH 60 L ..... 20 Ton .....	<b>26</b>	• GH 300 L ..... 100 Ton .....	<b>58</b>
• GH 60 YK ..... 20 Ton .....	<b>28</b>	• GH AĞIR TİP TK KURTARICI .....	<b>62</b>





GH 9 TK

[www.gucluhidrolik.com.tr](http://www.gucluhidrolik.com.tr)

**Turkey**  
Discover  
the potential





GH 9 TK

**GUÇLU**







GH 9 TK

[www.gucluhidrolik.com.tr](http://www.gucluhidrolik.com.tr)

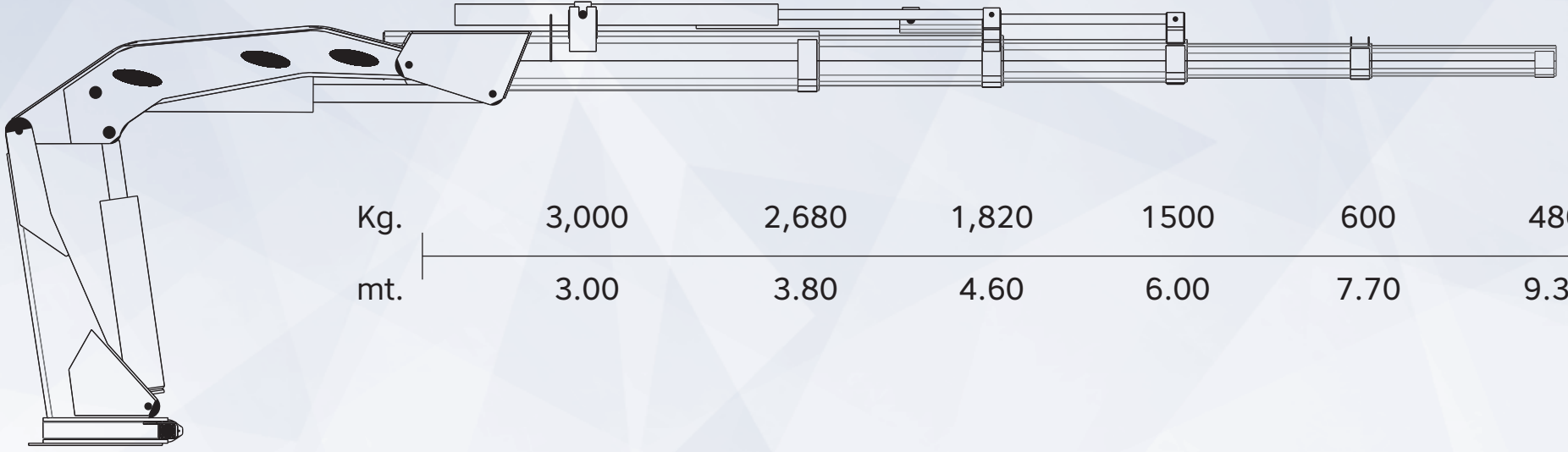
**Turkey**

Discover  
the potential





## GH 9 TK 3+1



Kg.	3,000	2,680	1,820	1500	600	480
mt.	3.00	3.80	4.60	6.00	7.70	9.30

STANDART  
ÖZELLİKLERSTANDARD  
FEATURES

**Sonsuz  
Dönüş**  
Endless  
Slewing



**Koltuk**  
Seat



**Yağ  
Tankı**  
Oil Tank



**Kanca**  
Hook



**Yağ  
Soğutucu**  
Oil  
Cooler



**Moment  
Kontrol**  
Moment  
Control

OPSİYONEL  
ÖZELLİKLEROPTIONAL  
FEATURES

**İlave  
Kumanda**  
Additional  
Commander



**Halat  
Tamburu**  
Rope  
Drum



**İlave  
Mekanik**  
Additional  
Mechanic



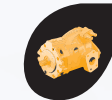
**Uzaktan  
Kumanda**  
Remote  
Controller



**Joystick**  
Joystick



**Operatör  
Kabini**  
Operator  
Cabinet



**Deplasmanlı  
Pompa**  
Displacement  
Pump



**Oransal  
Kumanda**  
Proportional  
Commander

**Kaldırma  
Diyagramı**  
Lifting Diagram



# GH 15 TK

[www.gucluhidrolik.com.tr](http://www.gucluhidrolik.com.tr)

**Turkey**

Discover  
the potential





GH 15 TK

**GÜÇLÜ**







GH 15 TK

[www.gucluhidrolik.com.tr](http://www.gucluhidrolik.com.tr)

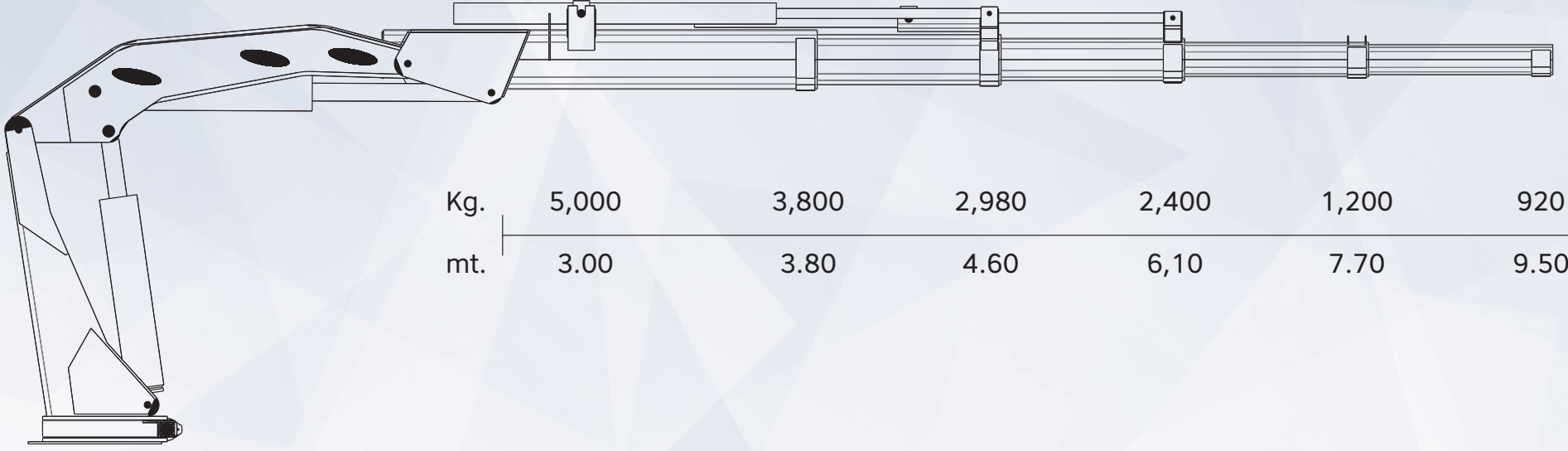
**Turkey**

Discover  
the potential





GH 15 TK 3+1



Kg.	5,000	3,800	2,980	2,400	1,200	920
mt.	3.00	3.80	4.60	6,10	7.70	9.50

STANDART  
ÖZELLİKLERSTANDARD  
FEATURES

**Sonsuz  
Dönüş**  
Endless  
Slewing



**Koltuk**  
Seat



**Yağ  
Tankı**  
Oil Tank



**Kanca**  
Hook



**Yağ  
Soğutucu**  
Oil  
Cooler



**Moment  
Kontrol**  
Moment  
Control

OPSİYONEL  
ÖZELLİKLEROPTIONAL  
FEATURES

**İlave  
Kumanda**  
Additional  
Commander



**Halat  
Tamburu**  
Rope  
Drum



**İlave  
Mekanik**  
Additional  
Mechanic



**Uzaktan  
Kumanda**  
Remote  
Controller



**Joystick**  
Joystick



**Operatör  
Kabini**  
Operator  
Cabinet



**Deplasmanlı  
Pompa**  
Displacement  
Pump



**Oransal  
Kumanda**  
Proportional  
Commander

**Kaldırma  
Diyagramı**  
Lifting Diagram



# GH 25 L

[www.gucluhidrolik.com.tr](http://www.gucluhidrolik.com.tr)

**Turkey**

Discover  
the potential





GH 25 L

**GUÇLU**







GH 25 YK

[www.gucluhidrolik.com.tr](http://www.gucluhidrolik.com.tr)

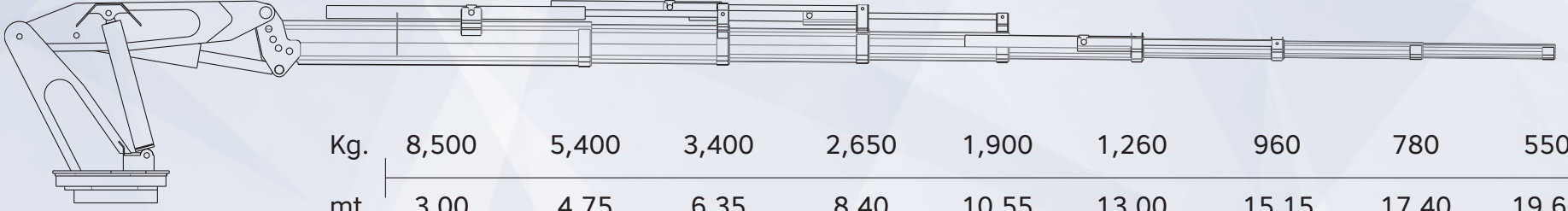
**Turkey**

Discover  
the potential



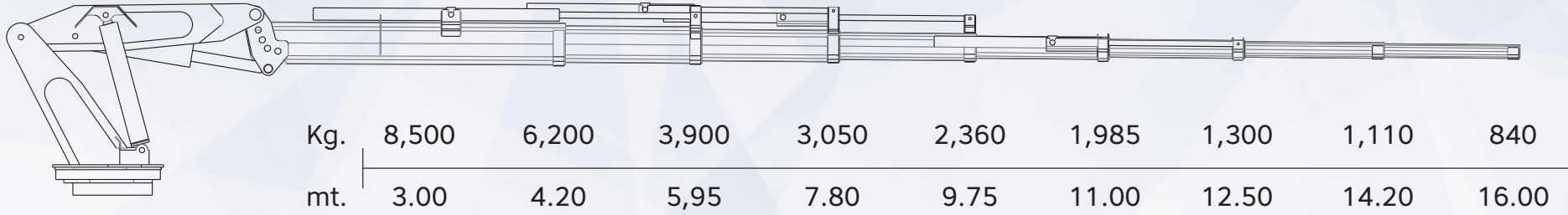


## GH 25 L 5+2



Kg.	8,500	5,400	3,400	2,650	1,900	1,260	960	780	550
mt.	3.00	4.75	6,35	8.40	10.55	13.00	15.15	17.40	19.65

## GH 25 YK 5+2



Kg.	8,500	6,200	3,900	3,050	2,360	1,985	1,300	1,110	840
mt.	3.00	4.20	5,95	7.80	9.75	11.00	12.50	14.20	16.00

STANDART  
ÖZELLİKLERSTANDARD  
FEATURES

**Sonsuz  
Dönüş**  
Endless  
Slewing



**Koltuk**  
Seat



**Yağ  
Tankı**  
Oil Tank



**Kanca**  
Hook



**Yağ  
Soğutucu**  
Oil  
Cooler



**Moment  
Kontrol**  
Moment  
Control

OPSİYONEL  
ÖZELLİKLEROPTIONAL  
FEATURES

**İlave  
Kumanda**  
Additional  
Commander



**Halat  
Tamburu**  
Rope  
Drum



**İlave  
Mekanik**  
Additional  
Mechanic



**Uzaktan  
Kumanda**  
Remote  
Controller



**Joystick**  
Joystick



**Operatör  
Kabini**  
Operator  
Cabinet



**Deplasmanlı  
Pompa**  
Displacement  
Pump



**Oransal  
Kumanda**  
Proportional  
Commander

**Kaldırma  
Diyagramı**  
Lifting Diagram



GH 30 L

[www.gucluhidrolik.com.tr](http://www.gucluhidrolik.com.tr)

**Turkey**

Discover  
the potential





GH 30 L

**GÜÇLÜ**







GH 30 YK

[www.gucluhidrolik.com.tr](http://www.gucluhidrolik.com.tr)

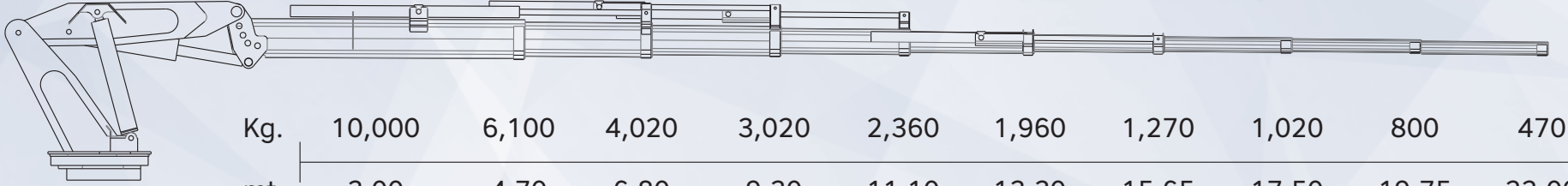
**Turkey**

Discover  
the potential



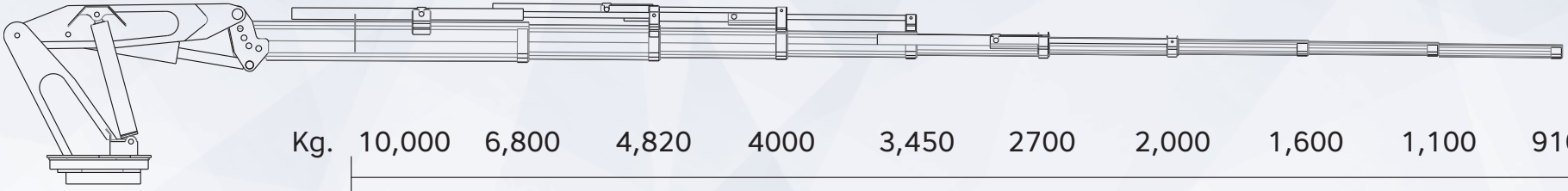


## GH 30 L 6+2



Kg.	10,000	6,100	4,020	3,020	2,360	1,960	1,270	1,020	800	470
mt.	3.00	4.70	6.80	9.30	11.10	13.30	15.65	17.50	19.75	22.00

## GH 30 YK 6+2



Kg.	10,000	6,800	4,820	4000	3,450	2700	2,000	1,600	1,100	910
mt.	3.00	4.10	5.60	7.10	8.95	10.70	12.65	14.50	16.75	19,00

STANDART  
ÖZELLİKLERSTANDARD  
FEATURES

**Sonsuz  
Dönüş**  
Endless  
Slewing



**Koltuk**  
Seat



**Yağ  
Tankı**  
Oil Tank



**Kanca**  
Hook



**Yağ  
Soğutucu**  
Oil  
Cooler



**Moment  
Kontrol**  
Moment  
Control

OPSİYONEL  
ÖZELLİKLEROPTIONAL  
FEATURES

**İlave  
Kumanda**  
Additional  
Commander



**Halat  
Tamburu**  
Rope  
Drum



**İlave  
Mekanik**  
Additional  
Mechanic



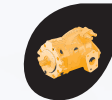
**Uzaktan  
Kumanda**  
Remote  
Controller



**Joystick**  
Joystick



**Operatör  
Kabini**  
Operator  
Cabinet



**Deplasmanlı  
Pompa**  
Displacement  
Pump



**Oransal  
Kumanda**  
Proportional  
Commander

**Kaldırma  
Diyagramı**  
Lifting Diagram



# GH 40 L

[www.gucluhidrolik.com.tr](http://www.gucluhidrolik.com.tr)

**Turkey**

Discover  
the potential



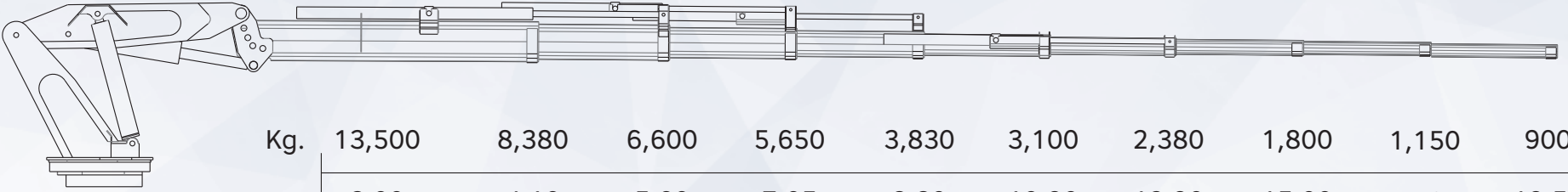


## GH 40 L 6+2



Kg.	13,500	7,500	4,900	3,360	2,580	2,050	1,480	1,150	860	670
mt.	3.00	4.70	7.00	9.00	11.20	13.20	15.65	17.50	19.75	22.00

## GH 40 YK 6+2



Kg.	13,500	8,380	6,600	5,650	3,830	3,100	2,380	1,800	1,150	900
mt.	3.00	4.10	5.60	7.05	8,80	10.90	12.90	15.00	17.25	19.50

STANDART  
ÖZELLİKLERSTANDARD  
FEATURES

**Sonsuz  
Dönüş**  
Endless  
Slewing



**Koltuk**  
Seat



**Yağ  
Tankı**  
Oil Tank



**Kanca**  
Hook



**Yağ  
Soğutucu**  
Oil  
Cooler



**Moment  
Kontrol**  
Moment  
Control

OPSİYONEL  
ÖZELLİKLEROPTIONAL  
FEATURES

**İlave  
Kumanda**  
Additional  
Commander



**Halat  
Tamburu**  
Rope  
Drum



**İlave  
Mekanik**  
Additional  
Mechanic



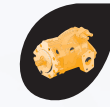
**Uzaktan  
Kumanda**  
Remote  
Controller



**Joystick**  
Joystick



**Operatör  
Kabini**  
Operator  
Cabinet



**Deplasmanlı  
Pompa**  
Displacement  
Pump



**Oransal  
Kumanda**  
Proportional  
Commander

**Kaldırma  
Diyagramı**  
Lifting Diagram



GH 50 L

[www.gucluhidrolik.com.tr](http://www.gucluhidrolik.com.tr)

**Gucluhidrolik**

Discover  
the potential





GH 50 L







GH 50 YK

[www.gucluhidrolik.com.tr](http://www.gucluhidrolik.com.tr)

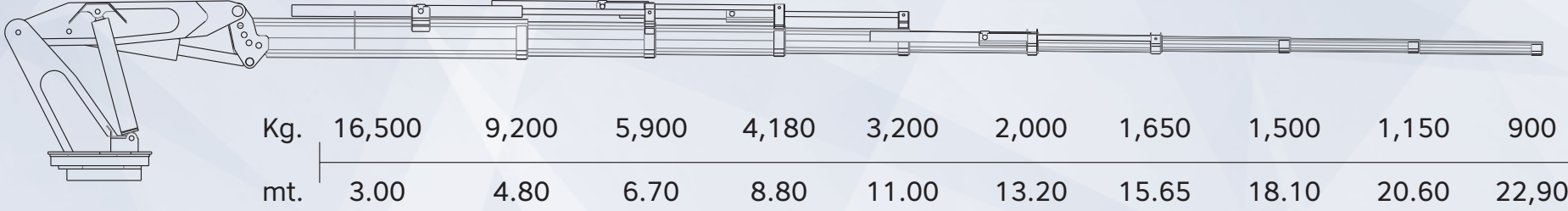
**Turkey**

Discover  
the potential



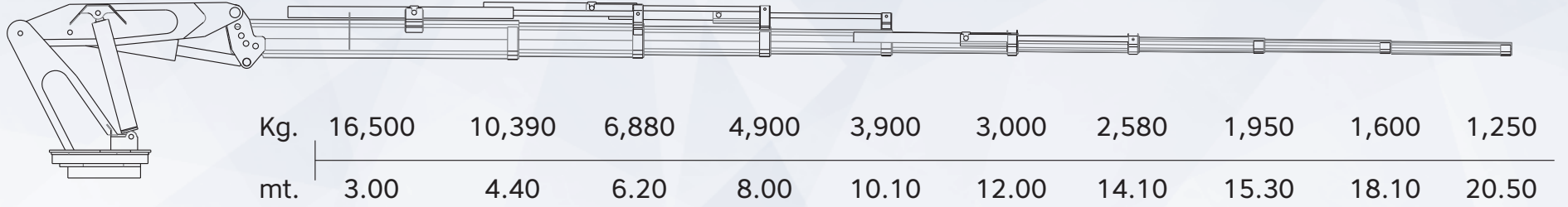


## GH 50 L 6+2



Kg.	16,500	9,200	5,900	4,180	3,200	2,000	1,650	1,500	1,150	900
mt.	3.00	4.80	6.70	8.80	11.00	13.20	15.65	18.10	20.60	22,90

## GH 50 YK 6+2



Kg.	16,500	10,390	6,880	4,900	3,900	3,000	2,580	1,950	1,600	1,250
mt.	3.00	4.40	6.20	8.00	10.10	12.00	14.10	15.30	18.10	20.50

STANDART  
ÖZELLİKLERSTANDARD  
FEATURES

**Sonsuz  
Dönüş**  
Endless  
Slewing



**Koltuk**  
Seat



**Yağ  
Tankı**  
Oil Tank



**Kanca**  
Hook



**Yağ  
Soğutucu**  
Oil  
Cooler



**Moment  
Kontrol**  
Moment  
Control

OPSİYONEL  
ÖZELLİKLEROPTIONAL  
FEATURES

**İlave  
Kumanda**  
Additional  
Commander



**Halat  
Tamburu**  
Rope  
Drum



**İlave  
Mekanik**  
Additional  
Mechanic



**Uzaktan  
Kumanda**  
Remote  
Controller



**Joystick**  
Joystick



**Operatör  
Kabini**  
Operator  
Cabinet



**Deplasmanlı  
Pompa**  
Displacement  
Pump



**Oransal  
Kumanda**  
Proportional  
Commander

**Kaldırma  
Diyagramı**  
Lifting Diagram



GH 60 L

[www.gucluhidrolik.com.tr](http://www.gucluhidrolik.com.tr)

**Turkey**

Discover  
the potential





GH 60 L

**GUÇLU**







GH 60 YK

[www.gucluhidrolik.com.tr](http://www.gucluhidrolik.com.tr)

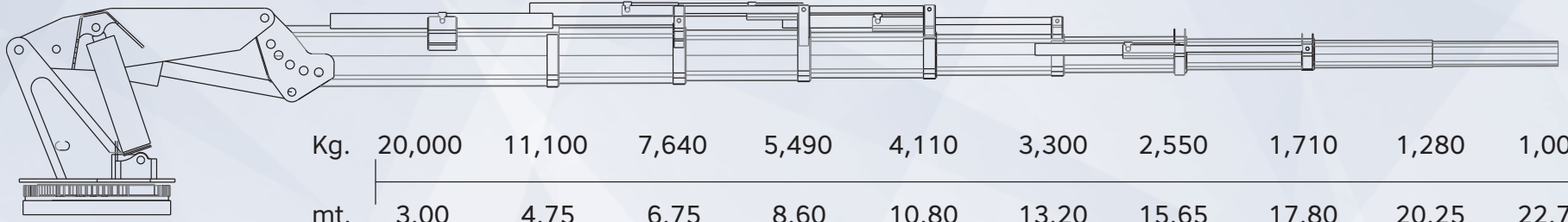
**Turkey**

Discover  
the potential

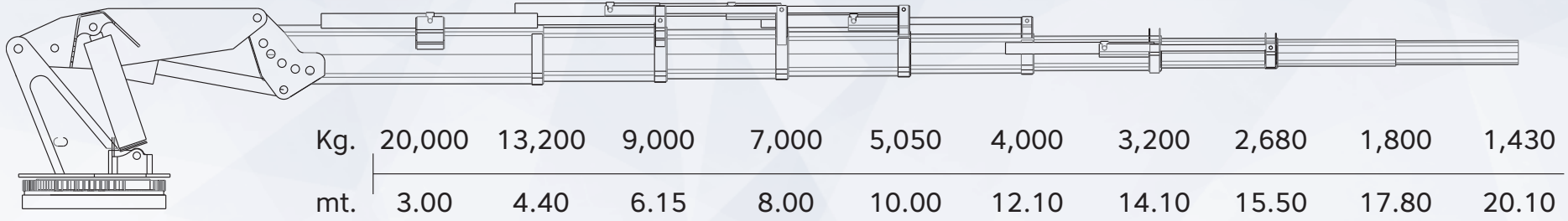




## GH 60 L 6+2



## GH 60 YK 6+2

STANDART  
ÖZELLİKLERSTANDARD  
FEATURES

**Sonsuz  
Dönüş**  
Endless  
Slewing



**Koltuk**  
Seat



**Yağ  
Tankı**  
Oil Tank



**Kanca**  
Hook



**Yağ  
Soğutucu**  
Oil  
Cooler



**Moment  
Kontrol**  
Moment  
Control

OPSİYONEL  
ÖZELLİKLEROPTIONAL  
FEATURES

**İlave  
Kumanda**  
Additional  
Commander



**Halat  
Tamburu**  
Rope  
Drum



**İlave  
Mekanik**  
Additional  
Mechanic



**Uzaktan  
Kumanda**  
Remote  
Controller



**Joystick**  
Joystick



**Operatör  
Kabini**  
Operator  
Cabinet



**Deplasmanlı  
Pompa**  
Displacement  
Pump



**Oransal  
Kumanda**  
Proportional  
Commander

**Kaldırma  
Diyagramı**  
Lifting Diagram



GH 75 L

[www.gucluhidrolik.com.tr](http://www.gucluhidrolik.com.tr)

**Gucluhidrolik**

Discover  
the potential





GH 75 L

**GÜÇLÜ**







GH 75 YK

[www.gucluhidrolik.com.tr](http://www.gucluhidrolik.com.tr)

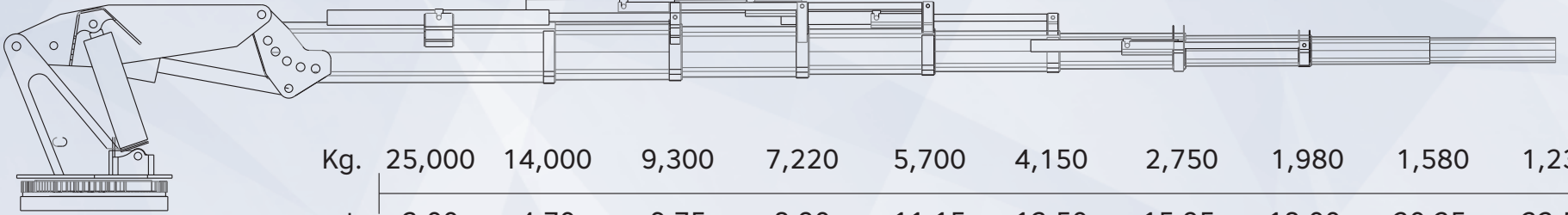
**Guclu**  
turkey

Discover  
the potential



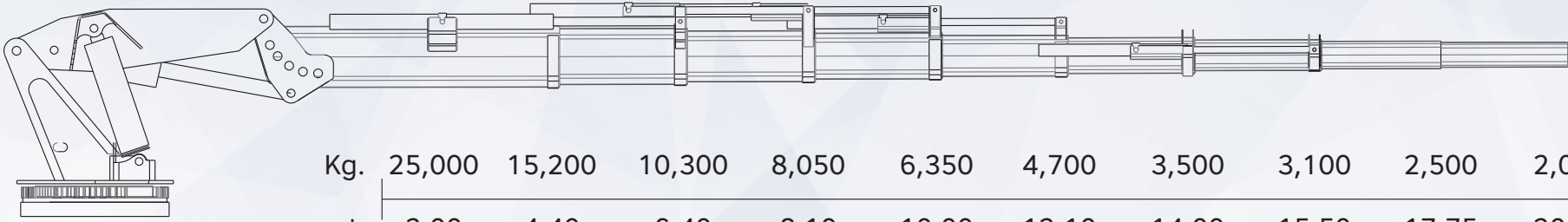


## GH 75 L 6+2



Kg.	25,000	14,000	9,300	7,220	5,700	4,150	2,750	1,980	1,580	1,230
mt.	3.00	4.70	6.75	8.90	11.15	13.50	15.95	18.00	20.25	22.50

## GH 75 YK 6+2



Kg.	25,000	15,200	10,300	8,050	6,350	4,700	3,500	3,100	2,500	2,000
mt.	3.00	4.40	6.40	8.10	10.00	12.10	14.00	15.50	17.75	20.00

STANDART  
ÖZELLİKLERSTANDARD  
FEATURES

**Sonsuz  
Dönüş**  
Endless  
Slewing



**Koltuk**  
Seat



**Yağ  
Tankı**  
Oil Tank



**Kanca**  
Hook



**Yağ  
Soğutucu**  
Oil  
Cooler



**Moment  
Kontrol**  
Moment  
Control

OPSİYONEL  
ÖZELLİKLEROPTIONAL  
FEATURES

**İlave  
Kumanda**  
Additional  
Commander



**Halat  
Tamburu**  
Rope  
Drum



**İlave  
Mekanik**  
Additional  
Mechanic



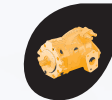
**Uzaktan  
Kumanda**  
Remote  
Controller



**Joystick**  
Joystick



**Operatör  
Kabini**  
Operator  
Cabinet



**Deplasmanlı  
Pompa**  
Displacement  
Pump



**Oransal  
Kumanda**  
Proportional  
Commander

**Kaldırma  
Diyagramı**  
Lifting Diagram



# GH 90 L

[www.gucluhidrolik.com.tr](http://www.gucluhidrolik.com.tr)

**Turkey**

Discover  
the potential





GH 90 L







GH 90 YK

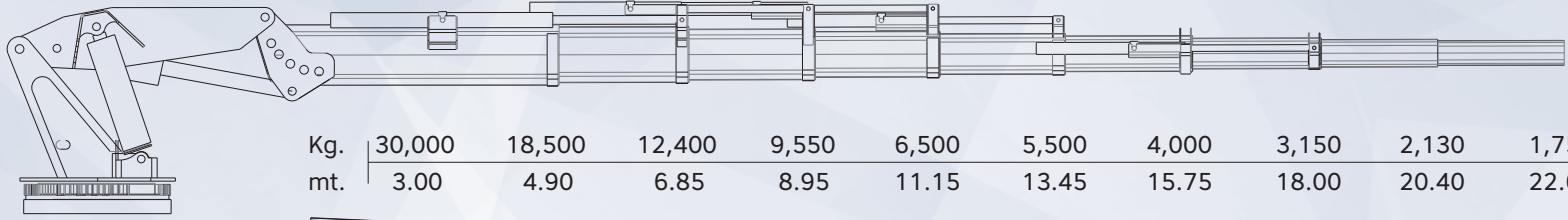
[www.gucluhidrolik.com.tr](http://www.gucluhidrolik.com.tr)

Turkey

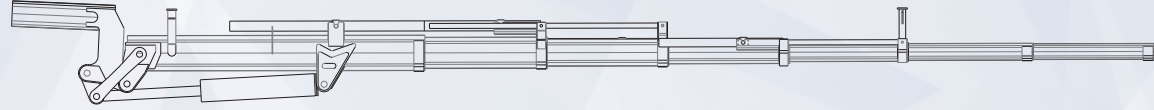
Discover  
the potential



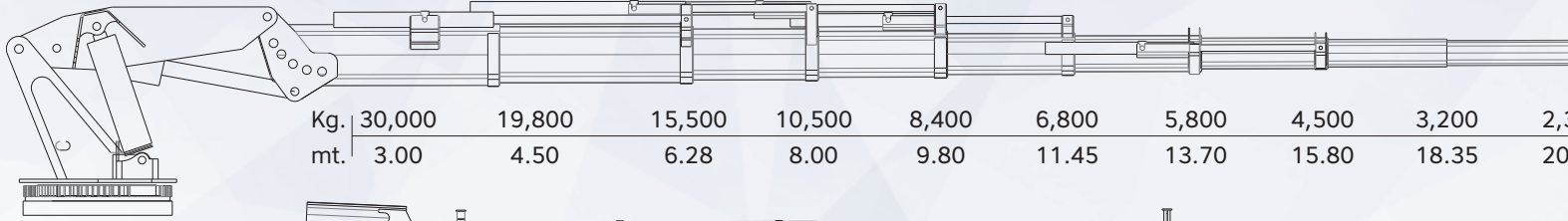


GH 90 L 6+2  
ÇK 4+2

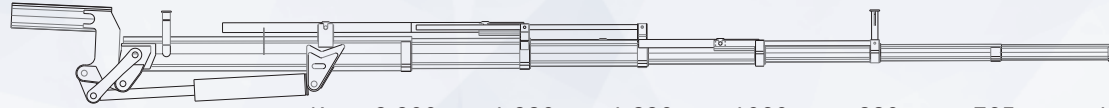
Kg.	30,000	18,500	12,400	9,550	6,500	5,500	4,000	3,150	2,130	1,750
mt.	3.00	4.90	6.85	8.95	11.15	13.45	15.75	18.00	20.40	22.65



Kg.	2,200	1,850	1,230	960	730	540	320
mt.	22.10	24.05	26.10	28.10	30.30	32.75	35.50

GH 90 YK 6+2  
ÇK4+2

Kg.	30,000	19,800	15,500	10,500	8,400	6,800	5,800	4,500	3,200	2,300
mt.	3.00	4.50	6.28	8.00	9.80	11.45	13.70	15.80	18.35	20.80



Kg.	2,200	1,980	1,320	1060	880	765	440
mt.	20.15	22.00	24.00	26.00	28.15	30.65	33.50

STANDART  
ÖZELLİKLERSTANDARD  
FEATURES

**Sonsuz Dönüş**  
Endless Slewing



**Koltuk**  
Seat



**Yağ Tankı**  
Oil Tank



**Kanca**  
Hook



**Yağ Soğutucu**  
Oil Cooler



**Moment Kontrol**  
Moment Control

OPSİYONEL  
ÖZELLİKLEROPTIONAL  
FEATURES

**İlave Kumanda**  
Additional Commander



**Halat Tamburu**  
Rope Drum



**İlave Mekanik**  
Additional Mechanic



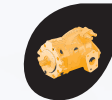
**Uzaktan Kumanda**  
Remote Controller



**Joystick**  
Joystick



**Operatör Kabini**  
Operator Cabinet



**Deplasmanlı Pompa**  
Displacement Pump



**Oransal Kumanda**  
Proportional Commander

**Kaldırma Diyagramı**  
Lifting Diagram



# GH 105 L

[www.gucluhidrolik.com.tr](http://www.gucluhidrolik.com.tr)

**Turkey**

Discover  
the potential





GH 105 L

**GUÇLU**







# GH 105 L

[www.gucluhidrolik.com.tr](http://www.gucluhidrolik.com.tr)

**Turkey**

Discover  
the potential





GH 105 L







# GH 105 L

[www.gucluhidrolik.com.tr](http://www.gucluhidrolik.com.tr)

**Turkey**

Discover  
the potential





GH 105 L

**GÜÇLÜ**







GH 105 YK

[www.gucluhidrolik.com.tr](http://www.gucluhidrolik.com.tr)

Turkey

Discover  
the potential





GH 105 L 6+2  
ÇK 4+2

Kg.	35,000	22,500	14,500	10,500	8,100	6,100	5,100	4,100	3,100	2,500
mt.	3.00	4.90	6.85	8.95	11.15	13.45	15.80	18.10	20.35	22.80
Kg.	2,420	2,100	1,550	1,150	780	690	440			
mt.	22.20	24.00	26.10	28.25	30.50	32.75	35.50			

GH 105 YK 6+2  
ÇK 4+2

Kg.	35,000	23,800	17,500	12,100	9,200	7,450	6,330	5,250	4,150	3,050
mt.	3.00	4.50	6.28	8.00	9.80	11.45	13.70	15.80	18.35	20.80
Kg.	2,500	2,060	1,600	1,310	985	795	664			
mt.	20.20	22.10	24.15	26.10	28.20	31.00	33.30			

STANDART  
ÖZELLİKLERSTANDARD  
FEATURES

Sonsuz  
Dönüş  
Endless  
Slewing



Koltuk  
Seat



Yağ  
Tankı  
Oil Tank



Kanca  
Hook



Yağ  
Soğutucu  
Oil  
Cooler



Moment  
Kontrol  
Moment  
Control



+Kg.  
Dilim Denge  
Ağırlık  
Balance  
Weight

OPSİYONEL  
ÖZELLİKLEROPTIONAL  
FEATURES

İlave  
Kumanda  
Additional  
Commander



Halat  
Tamburu  
Rope  
Drum



İlave  
Mekanik  
Additional  
Mechanic



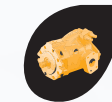
Uzaktan  
Kumanda  
Remote  
Controller



Joystick  
Joystick



Operatör  
Kabini  
Operator  
Cabinet



Deplasmanlı  
Pompa  
Displacement  
Pump



Oransal  
Kumanda  
Proportional  
Commander

Kaldırma  
Diyagramı  
Lifting Diagram





# GH 135 L

[www.gucluhidrolik.com.tr](http://www.gucluhidrolik.com.tr)

**Turkey**

Discover  
the potential





GH 135 L

**GUÇLU**







# GH 135 L

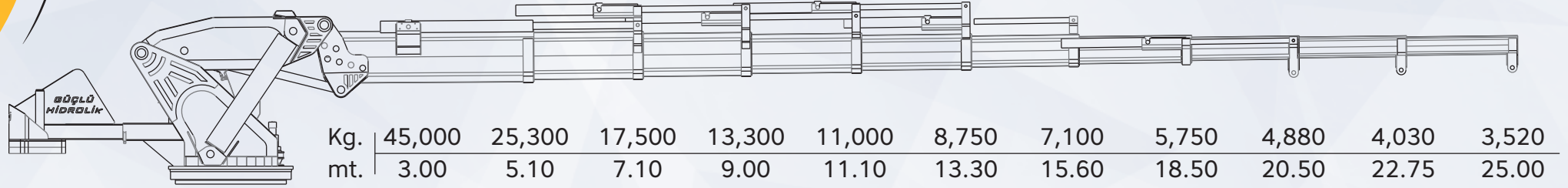
[www.gucluhidrolik.com.tr](http://www.gucluhidrolik.com.tr)

**Turkey**

Discover  
the potential



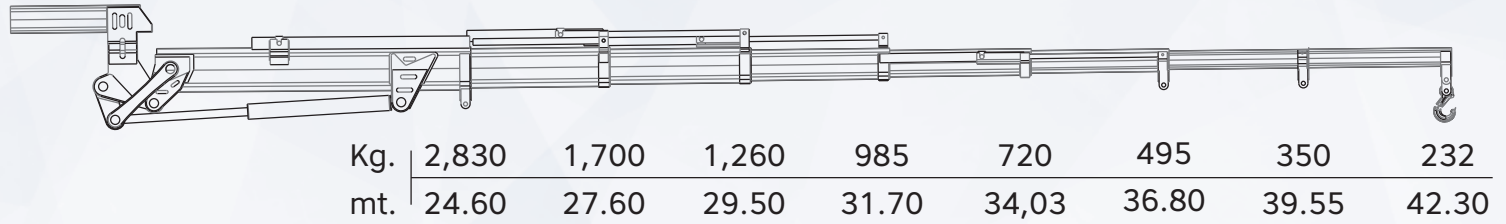




Kg.	45,000	25,300	17,500	13,300	11,000	8,750	7,100	5,750	4,880	4,030	3,520
mt.	3.00	5.10	7.10	9.00	11.10	13.30	15.60	18.50	20.50	22.75	25.00

## GH 135 L 7+2

### ÇK 5+2



Kg.	2,830	1,700	1,260	985	720	495	350	232
mt.	24.60	27.60	29.50	31.70	34,03	36.80	39.55	42.30

#### STANDART ÖZELLİKLER

#### STANDARD FEATURES



**Sonsuz  
Dönüş**  
Endless  
Slewing



**Koltuk**  
Seat



**Yağ  
Tankı**  
Oil Tank



**Kanca**  
Hook



**Yağ  
Soğutucu**  
Oil  
Cooler



**Moment  
Kontrol**  
Moment  
Control



**+Kg.  
Dilim Denge  
Ağırlık**  
Balance  
Weight

#### OPSIYONEL ÖZELLİKLER

#### OPTIONAL FEATURES



**İlave  
Kumanda**  
Additional  
Commander



**Halat  
Tamburu**  
Rope  
Drum



**İlave  
Mekanik**  
Additional  
Mechanic



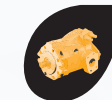
**Uzaktan  
Kumanda**  
Remote  
Controller



**Joystick**  
Joystick



**Operatör  
Kabini**  
Operator  
Cabinet



**Deplasmanlı  
Pompa**  
Displacement  
Pump



**Oransal  
Kumanda**  
Proportional  
Commander

**Kaldırma  
Diyagramı**  
Lifting Diagram





# GH 165 L

[www.gucluhidrolik.com.tr](http://www.gucluhidrolik.com.tr)

**Turkey**

Discover  
the potential





GH 165 L

**GUÇLU**







# GH 165 L

[www.gucluhidrolik.com.tr](http://www.gucluhidrolik.com.tr)

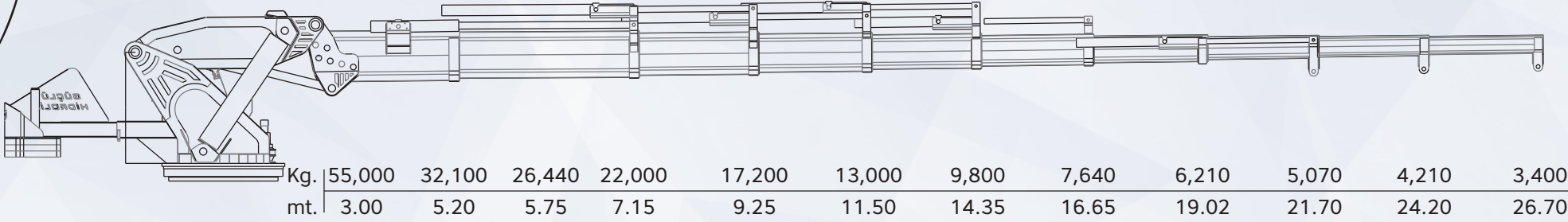
**Turkey**

Discover  
the potential



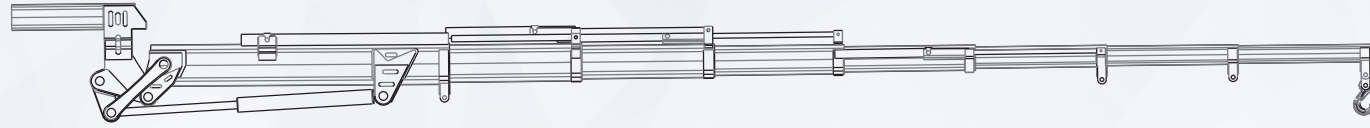


# GH 165 L



Kg.	55,000	32,100	26,440	22,000	17,200	13,000	9,800	7,640	6,210	5,070	4,210	3,400
mt.	3.00	5.20	5.75	7.15	9.25	11.50	14.35	16.65	19.02	21.70	24.20	26.70

## GH 165 L 7+2 ÇK 5+2



Kg.	2,800	2,050	1,680	1,230	930	760	470	314
mt.	25.30	27.70	29.85	32.10	34.45	36.90	39.65	43.40

### STANDART ÖZELLİKLER

### STANDARD FEATURES



Sonsuz  
Dönüş  
Endless  
Slewing



Koltuk  
Seat



Yağ  
Tankı  
Oil Tank



Kanca  
Hook



Yağ  
Soğutucu  
Oil  
Cooler



Moment  
Kontrol  
Moment  
Control



+Kg.  
Dilim Denge  
Ağırlık  
Balance  
Weight

### OPSİYONEL ÖZELLİKLER

### OPTIONAL FEATURES



İlave  
Kumanda  
Additional  
Commander



Halat  
Tamburu  
Rope  
Drum



İlave  
Mekanik  
Additional  
Mechanic



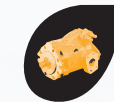
Uzaktan  
Kumanda  
Remote  
Controller



Joystick  
Joystick



Operatör  
Kabini  
Operator  
Cabinet



Deplasmanlı  
Pompa  
Displacement  
Pump



Oransal  
Kumanda  
Proportional  
Commander

Kaldırma  
Diyagramı  
Lifting Diagram





# GH 225 L

[www.gucluhidrolik.com.tr](http://www.gucluhidrolik.com.tr)

**Turkey**

Discover  
the potential





GH 225 L

**GUÇLU**







# GH 225 L

[www.gucluhidrolik.com.tr](http://www.gucluhidrolik.com.tr)

**TURKEY**

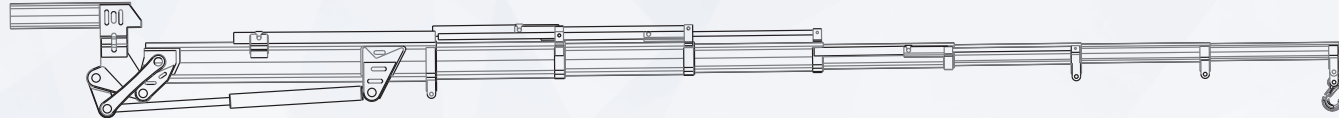
Discover  
the potential





Kg.	75,000	36,200	27,100	21,500	16,500	13,500	11,010	8,545	7,000	5,600	5,000
mt.	3.00	5.65	7.40	9.50	11.75	14.05	16.20	18.75	21.75	24.25	26.25

## GH 225 L 7+2 ÇK 5+2



Kg.	3,920	3,420	2,150	1,810	1,290	930	530	250
mt.	25.85	28.00	30.25	32.60	35.05	37.60	41.10	44.10

### STANDART ÖZELLİKLER

### STANDARD FEATURES



**Sonsuz  
Dönüş**  
Endless  
Slewing



**Koltuk**  
Seat



**Yağ  
Tankı**  
Oil Tank



**Kanca**  
Hook



**Yağ  
Soğutucu**  
Oil  
Cooler



**Moment  
Kontrol**  
Moment  
Control



**+Kg.  
Dilim Denge  
Ağırlık**  
Balance  
Weight

### OPSİYONEL ÖZELLİKLER

### OPTIONAL FEATURES



**İlave  
Kumanda**  
Additional  
Commander



**Halat  
Tamburu**  
Rope  
Drum



**İlave  
Mekanik**  
Additional  
Mechanic



**Uzaktan  
Kumanda**  
Remote  
Controller



**Joystick**  
Joystick



**Operatör  
Kabini**  
Operator  
Cabinet



**Deplasmanlı  
Pompa**  
Displacement  
Pump



**Oransal  
Kumanda**  
Proportional  
Commander

**Kaldırma  
Diyagramı**  
Lifting Diagram





# GH 300 L

[www.gucluhidrolik.com.tr](http://www.gucluhidrolik.com.tr)

**Turkey**

Discover  
the potential





GH 300 L







# GH 300 L

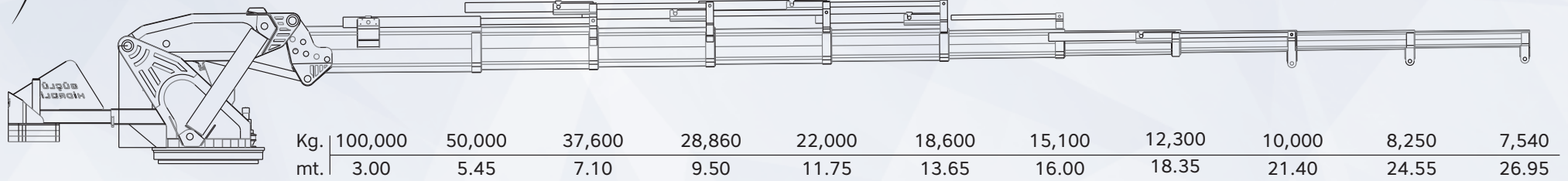
[www.gucluhidrolik.com.tr](http://www.gucluhidrolik.com.tr)

**Turkey**

Discover  
the potential



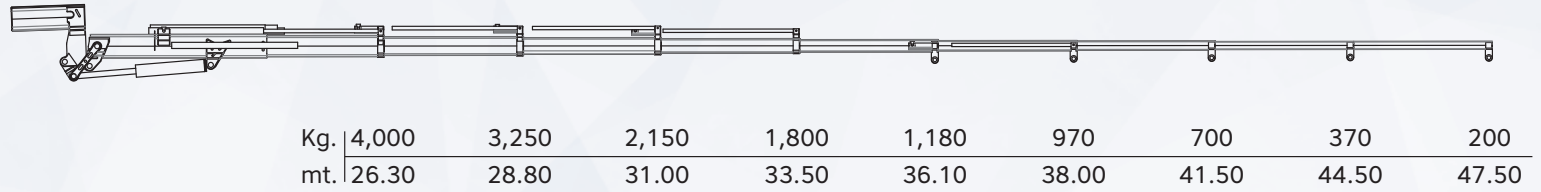




Kg.	100,000	50,000	37,600	28,860	22,000	18,600	15,100	12,300	10,000	8,250	7,540
mt.	3.00	5.45	7.10	9.50	11.75	13.65	16.00	18.35	21.40	24.55	26.95

## GH 300 L 7+2

### ÇK 6+2



Kg.	4,000	3,250	2,150	1,800	1,180	970	700	370	200
mt.	26.30	28.80	31.00	33.50	36.10	38.00	41.50	44.50	47.50

#### STANDART ÖZELLİKLER

#### STANDARD FEATURES



**Sonsuz  
Dönüş**  
Endless  
Slewing



**Koltuk**  
Seat



**Yağ  
Tankı**  
Oil Tank



**Kanca**  
Hook



**Yağ  
Soğutucu**  
Oil  
Cooler



**Moment  
Kontrol**  
Moment  
Control



**+Kg.  
Dilim Denge  
Ağırlık**  
Balance  
Weight

#### OPSIYONEL ÖZELLİKLER

#### OPTIONAL FEATURES



**İlave  
Kumanda**  
Additional  
Commander



**Halat  
Tamburu**  
Rope  
Drum



**İlave  
Mekanik**  
Additional  
Mechanic



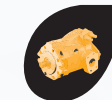
**Uzaktan  
Kumanda**  
Remote  
Controller



**Joystick**  
Joystick



**Operatör  
Kabini**  
Operator  
Cabinet



**Deplasmanlı  
Pompa**  
Displacement  
Pump



**Oransal  
Kumanda**  
Proportional  
Commander

**Kaldırma  
Diyagramı**  
Lifting Diagram





# GH AĞIR TİP TK KURTARICI

[www.gucluhidrolik.com.tr](http://www.gucluhidrolik.com.tr)

**Turkey**

Discover  
the potential











# GH AĞIR TİP TK KURTARICI

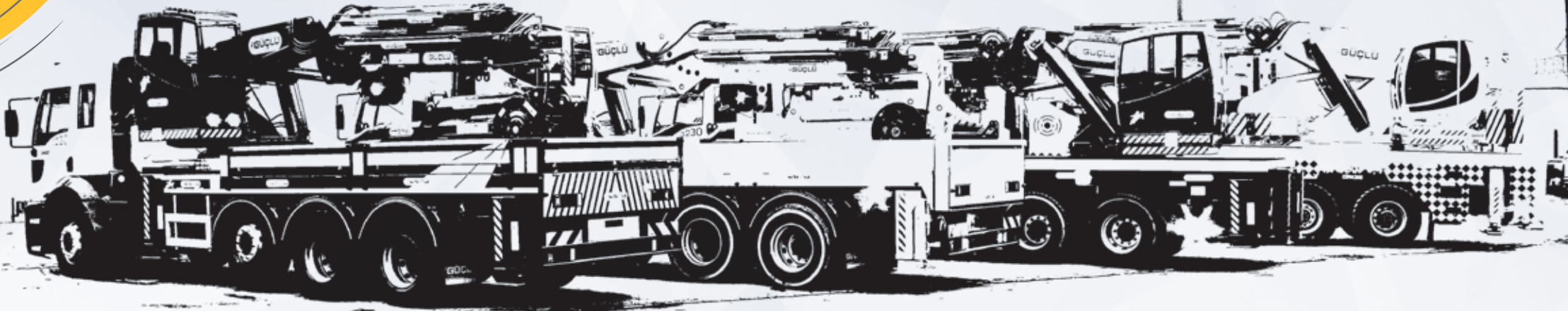
[www.gucluhidrolik.com.tr](http://www.gucluhidrolik.com.tr)

**Türkey**

Discover  
the potential







## STANDART ÖZELLİKLER

## STANDARD FEATURES



**Sonsuz  
Dönüş**  
Endless  
Slewing



**Koltuk**  
Seat



**Yağ  
Tankı**  
Oil Tank



**Kanca**  
Hook



**Yağ  
Soğutucu**  
Oil  
Cooler



**Moment  
Kontrol**  
Moment  
Control



**Dilim Denge  
Ağırlık**  
Balance  
Weight

## OPSİYONEL ÖZELLİKLER

## OPTIONAL FEATURES



**İlave  
Kumanda**  
Additional  
Commander



**Halat  
Tamburu**  
Rope  
Drum



**İlave  
Mekanik**  
Additional  
Mechanic



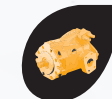
**Uzaktan  
Kumanda**  
Remote  
Controller



**Joystick**  
Joystick



**Operatör  
Kabini**  
Operator  
Cabinet



**Deplasmanlı  
Pompa**  
Displacement  
Pump



**Oransal  
Kumanda**  
Proportional  
Commander





Discover  
the potential



1. Organize Sanayi İstikamet Cad. No:27 Selçuklu / KONYA - TÜRKİYE

Tel: +90 332 251 02 65 - 249 16 14 / Fax: +90 332 251 44 51



**KOSGEB**  
www.kosgeb.gov.tr  
Basım Tarihi: 28.04.2018  
Sarışen Reklam: 0.332. 342 09 73

[www.gucluhidrolik.com.tr](http://www.gucluhidrolik.com.tr) - [bilgi@gucluhidrolik.com.tr](mailto:bilgi@gucluhidrolik.com.tr)